

# Economic Development

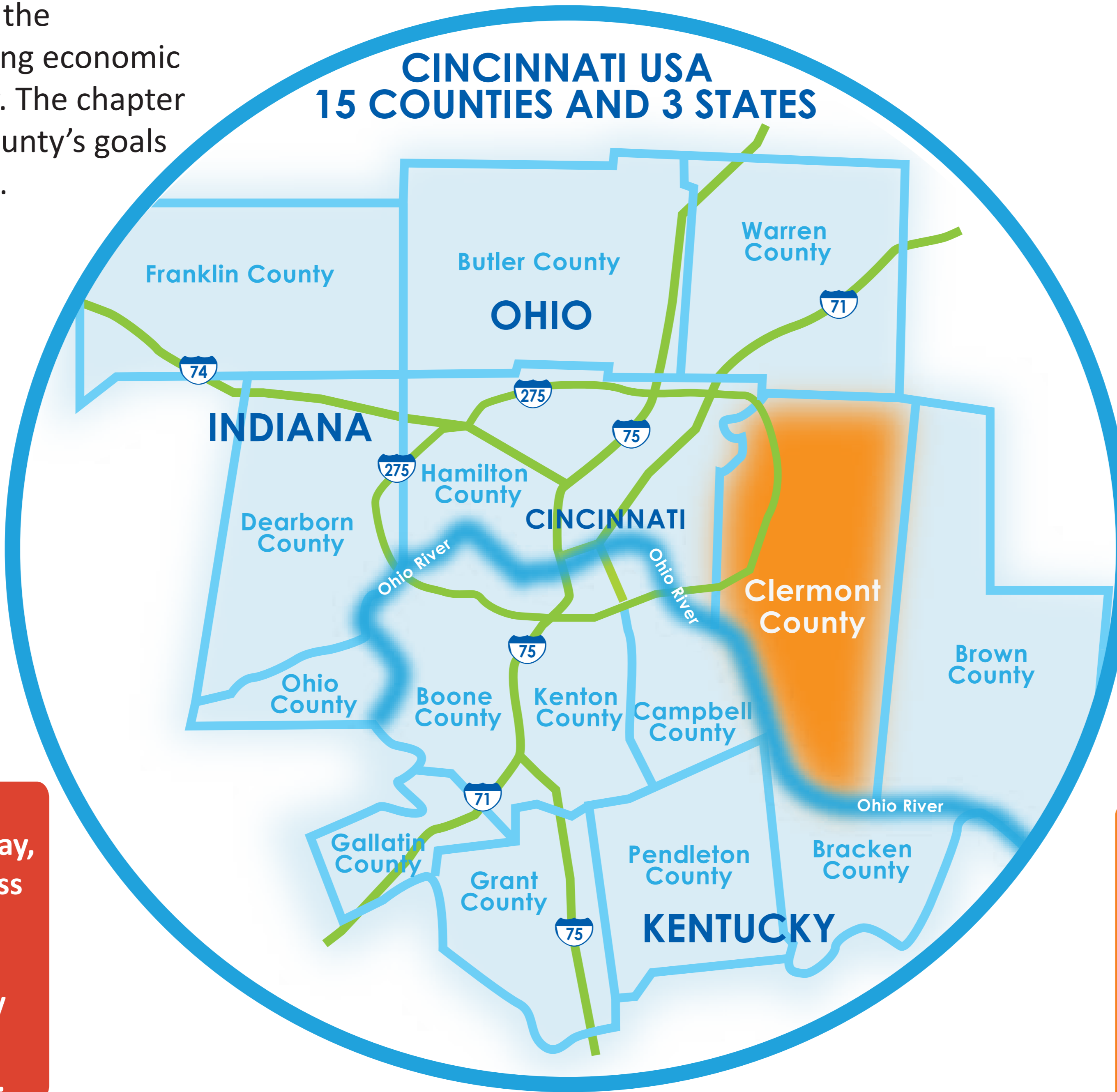
## INTRODUCTION

The Economic Development element of the comprehensive plan describes the existing economic conditions and trends within the county. The chapter analyzes the data to help identify the county's goals relating to future development patterns.

Over 10,000 businesses are located in Clermont County, ranging in size from sole proprietorships to major corporations spread over a multitude of industries including manufacturing, retail and wholesale, construction, IT and finance, as well as service-based and healthcare.

With its own labor force of nearly 110,000 people, Clermont County is positioned well in the greater Cincinnati area, whose labor force is approximately 1.5 million.

Clermont County's convenient access to Interstates 71 and 75 via the I-275 beltway, in combination with available land, excess utility capacity (sewer & water) and transportation infrastructure improvements, provides the opportunity for the county to take advantage of the economic growth potential of Cincinnati.



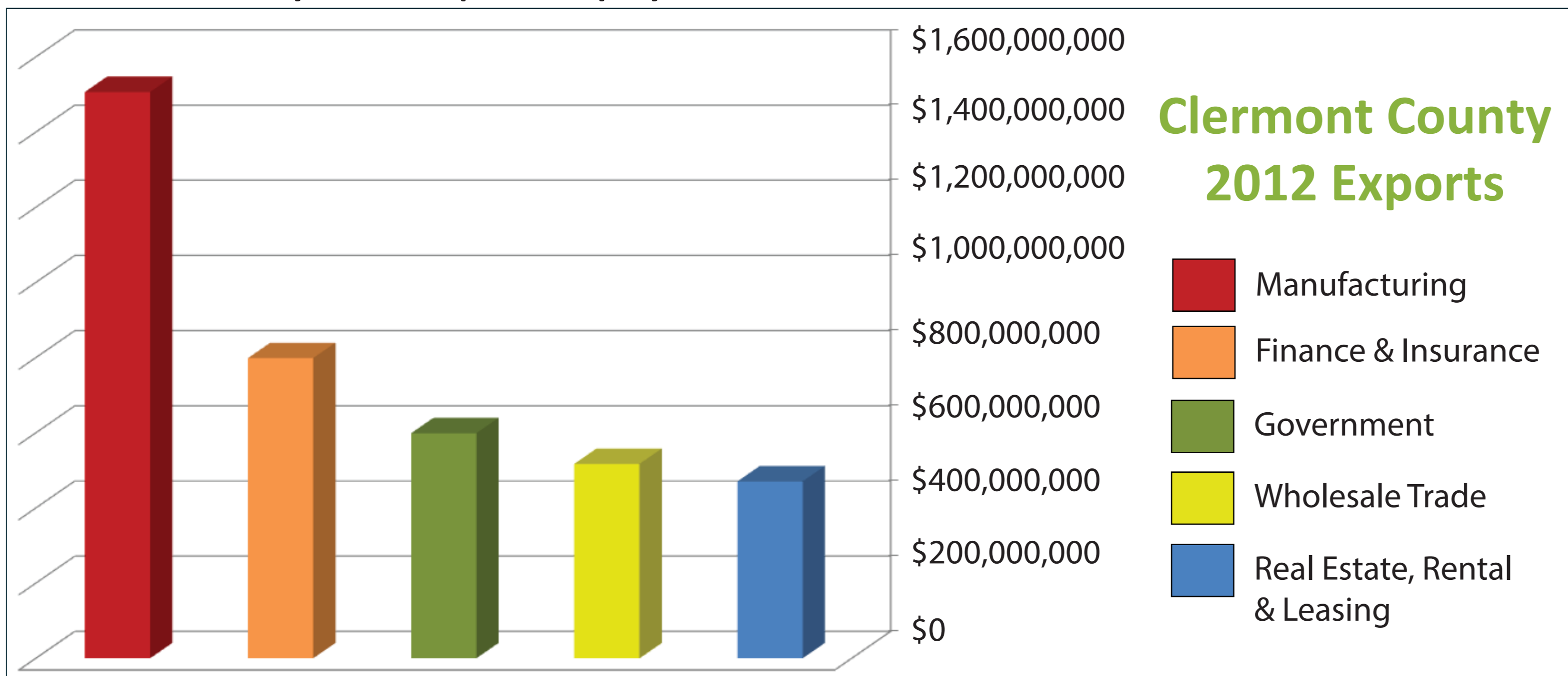
Clermont County's largest and fastest growing employers are professional service businesses. American Modern Insurance Group (AMIG) and Total Quality Logistics (TQL) have invested nearly \$45 million in new headquarters facilities and are Clermont County's two largest employers.

The strength of the workforce's knowledge base is demonstrated by the presence of Siemens PLM and Tata Consultancy Services' North American Delivery Center. These two companies combined employ over 1,000 computer programmers and software engineers in Clermont County.

Many of Clermont County's largest employers have found the young professional talent they need to help their companies' grow here. Over 50% of the county's labor force commutes to other communities for employment opportunities.

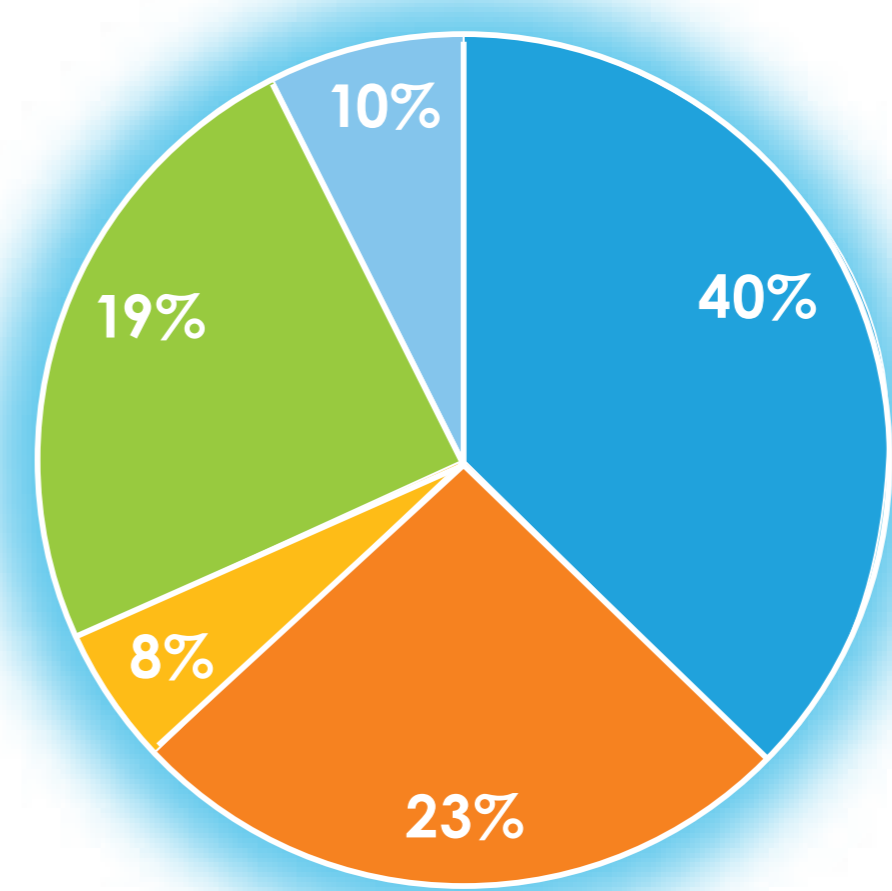
### Top Private Sector Employers in Clermont County

- |  |   |
|--|---|
| 1. Total Quality Logistics   1,302 Employees   | 6. Milacron Plastics Technologies   550 Employees |
| 2. American Modern Insurance   1,200 Employees | 7. Mercy Hospital Clermont   500 Employees        |
| 3. Siemens PLM   660 Employees                 | 8. Duke Energy   431 Employees                    |
| 4. L-3 Fuzing & Ordnance   600 Employees       | 9. International Paper/XPEDX   322 Employees      |
| 5. Tata Consultancy Services   600 Employees   | 10. DRS Technologies   320 Employees              |



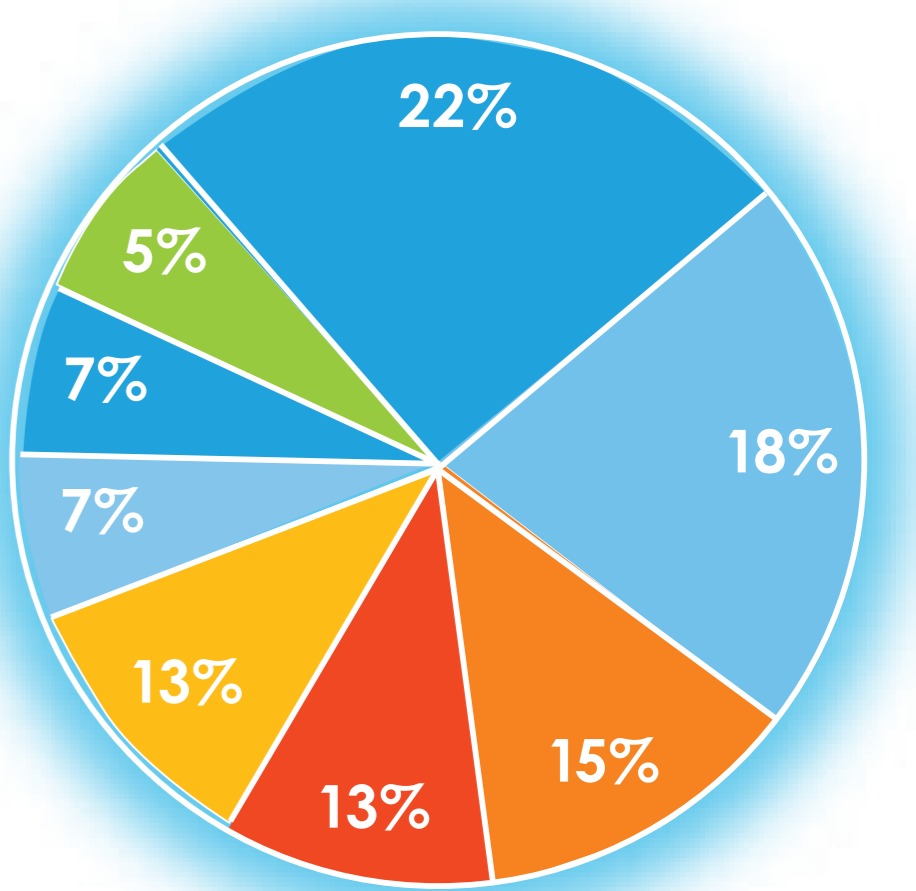
### Clermont County Workforce Demographics

EDUCATIONAL ATTAINMENT



- HIGH SCHOOL GRADUATE
- SOME COLLEGE, NO DEGREE
- ASSOCIATE DEGREE
- BACHELOR DEGREE
- GRADUATE OR/ PROFESSIONAL DEGREE

EMPLOYMENT BY INDUSTRY



- RETAIL TRADE
- GOVERNMENT
- ACCOMODATIONS & FOOD SERVICE
- MANUFACTURING
- HEALTHCARE & SOCIAL ASSISTANCE
- FINANCE & INSURANCE
- CONSTRUCTION
- ADMINSTRATIVE & SUPPORT

