

## INTRODUCTION

The land use element of the comprehensive plan identifies recommendations of future land uses within the County.

Most of the townships in Clermont County already have adopted future land use plans and these plans will be briefly outlined throughout this chapter. Website links are provided for more information about each plan.

Clermont County uses Township land use plans when considering approval for rezoning applications and other requests, such as development approval, to promote healthy growth throughout the county.

For those townships that have not adopted a land use plan, reference to those townships' zoning resolutions have been made. Washington Township has neither a land use plan nor a zoning resolution.

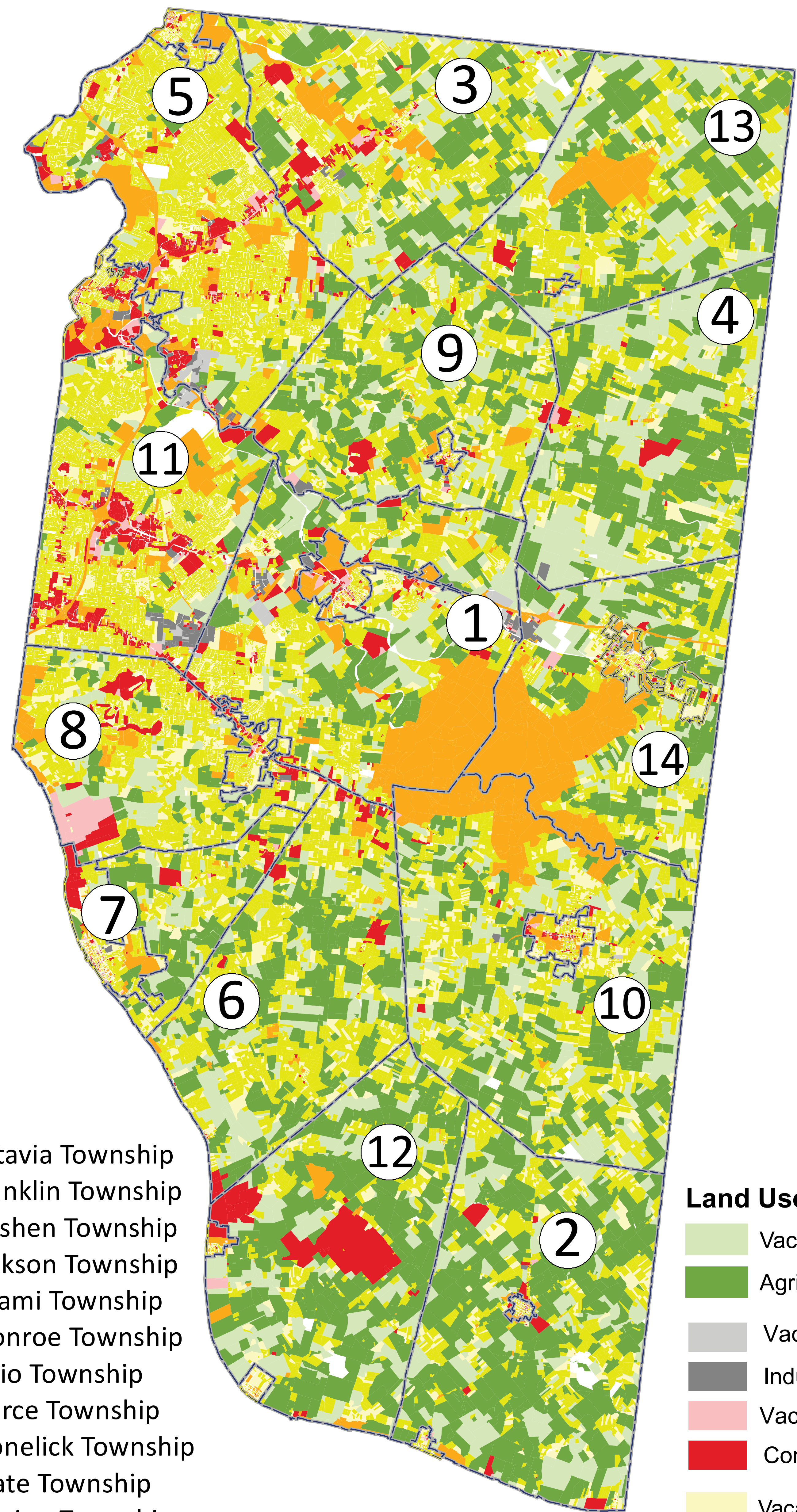
### Townships with Adopted Land Use Plans

- Batavia Township | Growth Management Plan
- Goshen Township | Growth Management Plan
- Jackson Township | Growth Management Plan
- Miami Township | Imagine Miami 2025
- Monroe Township | Land Use Plan
- Pierce Township | Growth Management Plan
- Stonelick Township | Growth Management Plan
- Union Township | Horizon 2030 Comp Plan
- Williamsburg Township | Growth Management

The most prominent land uses in Clermont County are Agricultural (44%) and Residential (41%).












## Clermont County Land Use Types



1. Batavia Township
2. Franklin Township
3. Goshen Township
4. Jackson Township
5. Miami Township
6. Monroe Township
7. Ohio Township
8. Pierce Township
9. Stonelick Township
10. Tate Township
11. Union Township
12. Washington Township
13. Wayne Township
14. Williamsburg Township

### Land Use Types

	Vacant Agricultural	
	Agricultural	<b>44%</b>
	Vacant Industrial	
	Industrial	<b>1%</b>
	Vacant Commercial	
	Commercial	<b>6%</b>
	Vacant Residential	
	Residential	<b>41%</b>
	Government Owned	<b>8%</b>