

## CLERMONT COUNTY TRANSPORTATION IMPROVEMENT DISTRICT (CCTID)

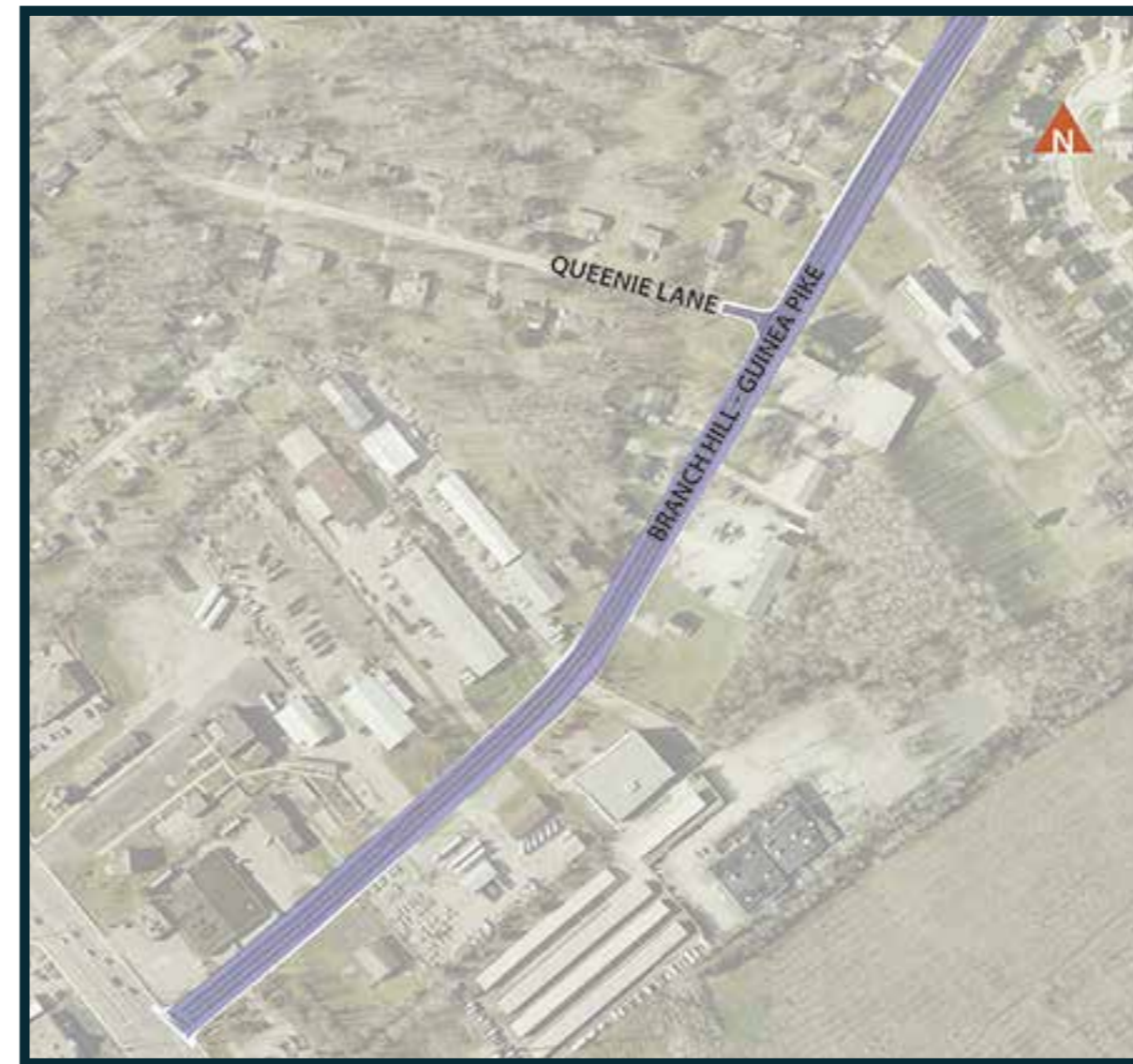
Established in June 2006, the Clermont County Transportation Improvement District's (CCTID) primary function is to take the lead in working between local jurisdictional partners and other county, state and federal agencies to identify, develop and secure funding for transportation improvement projects that support local and regional economic development strategies.



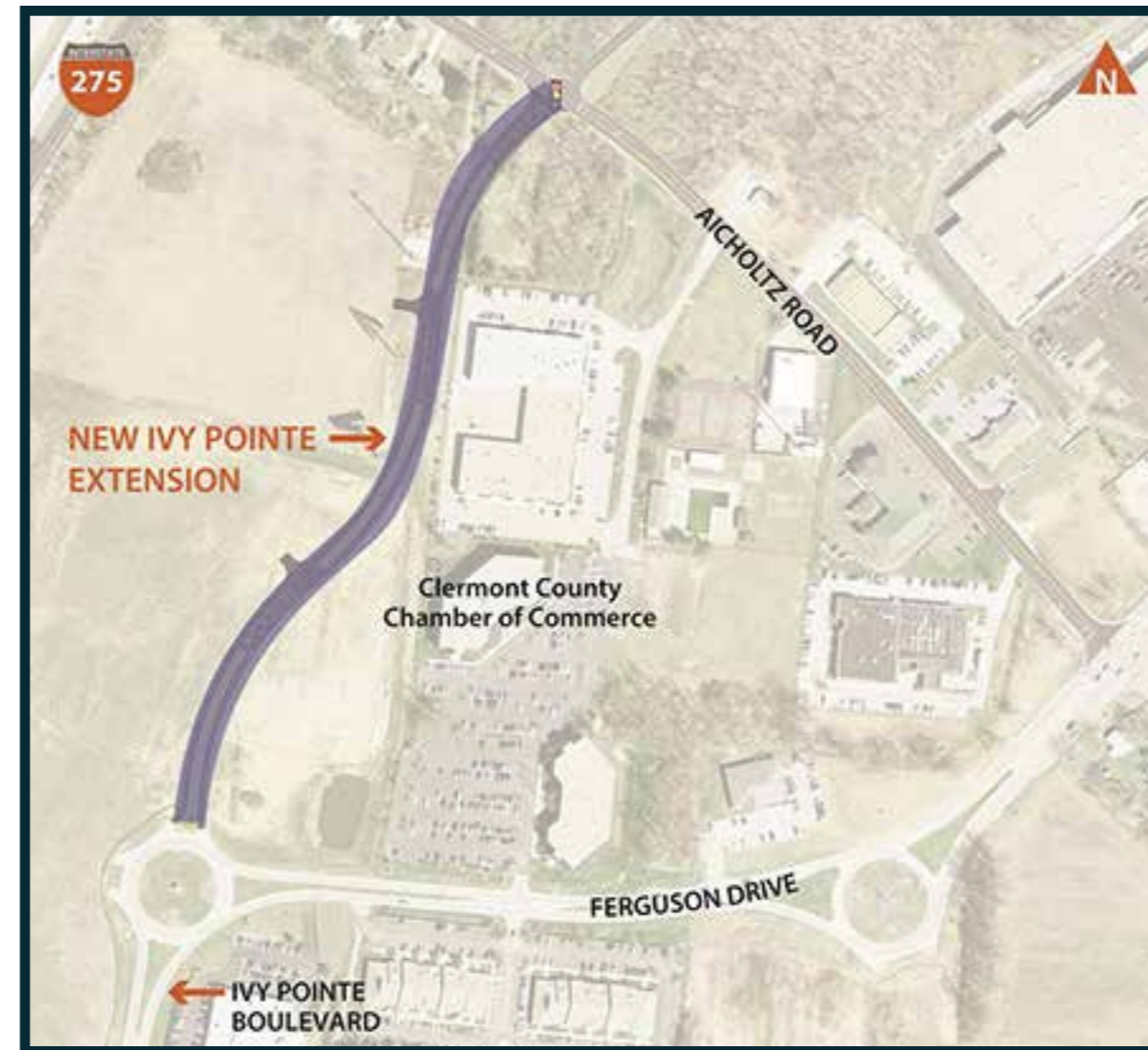
**Reconstruction of Eastgate Blvd/SR 32**  
Includes the reconstruction and widening of the Eastgate Boulevard structure over SR 32, the relocation of the existing Westbound entrance and exit ramps from SR 32 to Eastgate North Drive instead of Eastgate Boulevard, and the reconstruction of the Westbound loop ramp from Eastgate Boulevard to SR 32.



**I-275/SR 32 Interchange Improvements**  
Improvements to the I-275/SR32 Interchange will address a variety of problems associated with the existing interchanges.



**Branch Hill Guinea & SR 28 Improvements**  
Project will reduce congestion and minimize travel delays in the area by providing additional storage space for turn lanes on Branch Hill Guinea Pike and making other related improvements.



**Ivy Pointe Road Extension**  
Extension will improve access in this area and provide better service to traffic that will be generated by the new Cincinnati Children's Hospital development. This road improvement will also ease congestion on Eastgate Boulevard and provide better connectivity for the entire area.

## State Route 32 - Interchange Improvements

Interchange improvements represent the most significant change to the traffic patterns in the Eastgate area. Work will address a variety of problems associated with the existing I-275/SR 32 and Eastgate Boulevard interchanges. These include high accident rates, increasing traffic and congestion and inappropriately spaced access points that require motorists to merge quickly and weave in between accelerating traffic.

